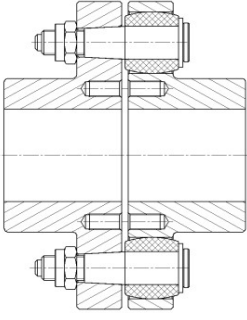
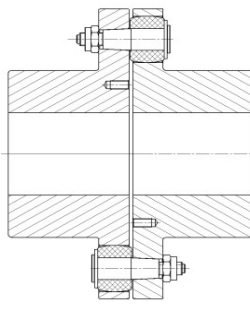


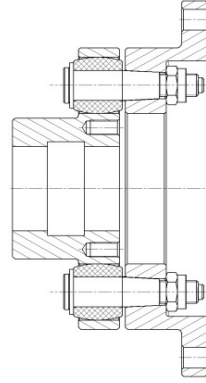
RUBFLEX[®] **Kaplin**
Coupling



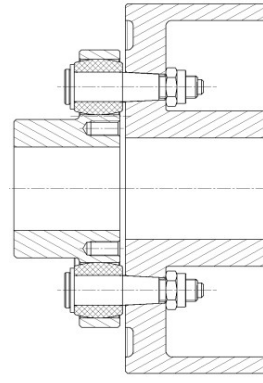
TIP 1: RBS/RBG 105-360
TYPE 1: RBS/RBG 105-360



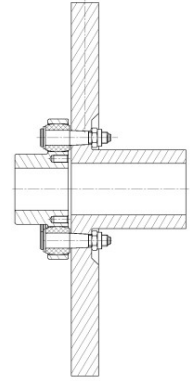
TIP 2: RBS/RBG 400-1250
TYPE 2: RBS/RBG 400-1250



TIP 3: RBS-F/RBG-F 105-710
TIP 3: RBS-F/RBG-F 105-710



TIP 4: RBS-K/RBG-K 150-360
TIP 4: RBS-K/RBG-K 150-360



TIP 5: RBS-D/RBG-D 150-360
TIP 5: RBS-D/RBG-D 150-360

İÇİNDEKİLER	SAYFA	CONTENTS	PAGE
DKF, DKC,DKC, RUP STANDART TIPLER	1	DKF, DK,DKC, RUP STANDARD TYPES	1
RUBFLEX STANDART TIPLER	2	RUBFLEX STANDARD TYPE	2
ÇMS - RBG (BOYUT 105 - 500)	3	ÇMS - RBG (SIZE 105 - 500)	3
ÇMS - RBG (BOYUT 560 -1250)	4	ÇMS - RBG (SIZE 560 -1250)	4
ÇMS - RBS (BOYUT 150 - 500)	5	ÇMS - RBS (SIZE 150 - 500)	5
ÇMS - RBS (BOYUT 560 -1250)	6	ÇMS - RBS (SIZE 560 -1250)	6
ÇMS - RBG-F (BOYUT 105 -710)	7	ÇMS - RBG-F (SIZE 105 -710)	7
ÇMS - RBS-F (BOYUT 105 -710)	8	ÇMS - RBS-F (SIZE 105 -710)	8
ÇMS - RBG-K (BOYUT 150-360)	9	ÇMS - RBG-K (SIZE 150-360)	9
ÇMS - RBS-K (BOYUT 150-360)	10	ÇMS - RBS-K (SIZE 150-360)	10
ÇMS - RBG-D (BOYUT 150-360)	11	ÇMS - RBG-D (SIZE 150-360)	11
ÇMS - RBS-D (BOYUT 150-360)	12	ÇMS - RBS-D (BOYUT 150-360)	12
ÇMS - RUBFLEX YEDEK PARÇA	13	ÇMS -RUBFLEX SPARE PARTS	13
RUBFLEX KAPLIN SEÇİM TABLOSU	14	HOW TO SELECT RIGHT COUPLING SIZE	14
MONTAJ VE BAKIM KILAVUZU	15	ASSEMBLY AND MAINTENANCE	15
MONTAJ VE BAKIM KILAVUZU	16	ASSEMBLY AND MAINTENANCE	16
DEMONTAJ VE BAKIM KILAVUZU	17	DISASSEMBLY MAINTENANCE AND INSPECTION	17
MOTOR TİP. GÖRE KAPLIN SEÇİM TABLOSU	18	COUPLING ASSIGNMENT TO STANDART MOTORS	18
MİL, DELİK VE KAMA ÖLÇÜLERİ TABLOSU ISO R773. .	19	DIMENSIONS OF SHAFT, BORE AND PARALELL -ISO R773	19

RUBFLEX KAPLINLERİN SEÇİMİNDE VE KULLANIMINDA DİKKAT EDİLECEK HUSUSLAR

- Kaplinler, montaj ve diğer hataları telafi eden elemanlar değildir.
- Seçtiğiniz kaplinin tablo değerindeki ,açısal,eksenel kaçıklıklara ve moment max delik çapına uygun olması gereklidir.
- Uzun ömürlü ve güvenli bir kullanım için yağlama ve bakım talimatlarına uymamız gereklidir.
- Tüm dönen elemanların muhafaza altına alınması gereklidir.

RECOMMENDED ATTENTIONS FOR SELECTION AND USAGE OF RUBFLEX COUPLINGS

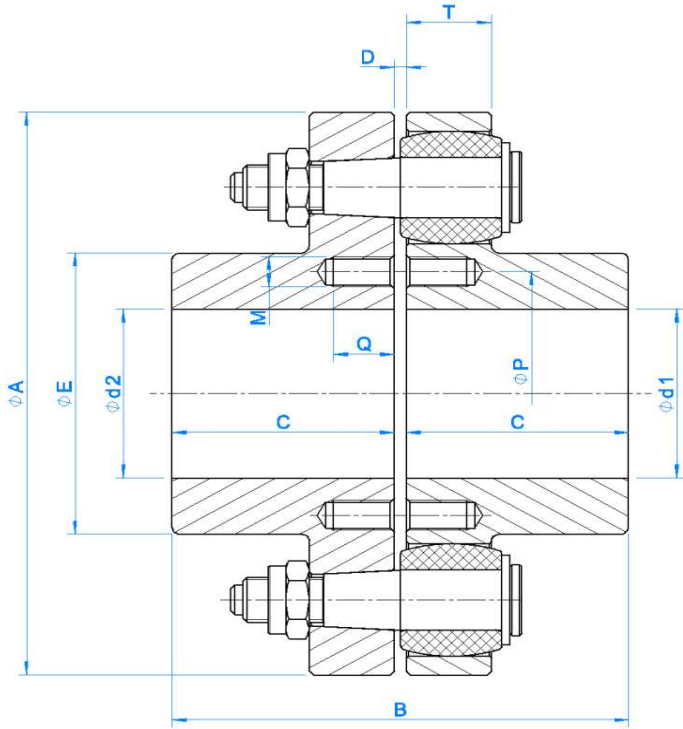
- Coupling is not a component that recompenses assembly faults and the others.
- Axial and angular misalignment, maximum torque, suitable bore diameter of gear couplings that you select must be observed of the tolerance field.
- Observe recommended lubricants, inspection and maintenance for safe and durable usage
- Make sure you covered all the rotating components.

RUBFLEX KAPLIN ÖZELLİKLERİ

- Makine ve mühendisliğin vazgeçilmez kaplinidir.
- Sınıfındaki en yüksek moment değerlerini taşır.
- Sanayinin her dalında , iletme, yürüme,kaldırma vb.güvenle kullanılır
- Fiçi tipindeki lastikleri sayesinde,radyal,eksenel ve açısız kaçıklıklarda lastiğe zarar vermeden en yüksek değerlere ulaşır.
- Titreşimleri alır,esnekliği sayesinde ekonomik güçler sağlar.
- Rubflex Kaplinler ; Lastik NBR(80 Shore), ıslah çeliği pimleri, GGG 40 ve GS 52 Kalitedeki gövdeleriyle hem uzun ömürlüdür, hemde beraber çalıştığı diğer elemanların uzun ömürlü olmasını sağlar.
- Fren diskli tiplerde malzeme cinsi ölçüsel tanıtım tablosunun üstünde verilmiştir.
- NBR lastikler, sürtünme ve yüksek basınç, yırtılma, kopma, aşınma ve gerilmeye mukavim,yüksek direnç elektrik yalıtkanlığı mükemmel, darbelerde, çarpmalarda,baskı altında, deformasyon göstermeyen, yağa , asite ve ısıya dayanıklı (-20 9C - +909C) elemanlardır.
- En az bakım gerektiren kaplinlerdir.
- Katalog dışındaki uygulamalar için proje departmanımızı arayınız.

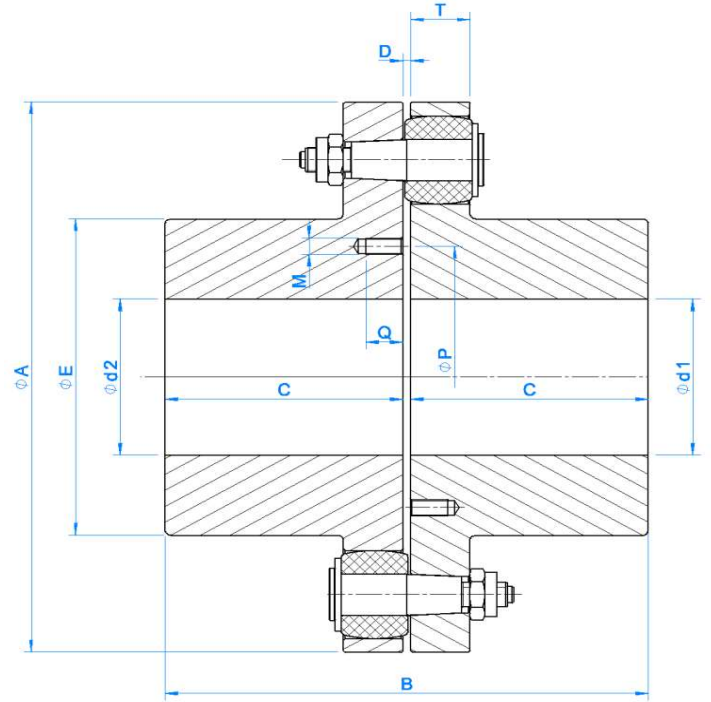
RUBFLEX COUPLING FEATURES

- It is indispensable coupling for machinery and engineering.
- It has the highest torque among the others.
- It is used safely in every part of the industry such as transmission,removal.
- The barrel rubber type bush provide maximum value without any damage in the observence of radial,axial and angular misalignment
- It absorbs vibration, provides economical power with it's flexibility.
- Rubflex couplings are both durable with it's NBR (80 Shore) rubber,steel pins, GGG 40 and GS 52 quality frames and provide the other components to be durable.
- Meterial type fort he brake disc types is indicated above the dimensions data sheet.
- NBR rubber are resistant to rubbing and hight pressure,rupture,abrasion and streching,have perfect electrical resistane insulation and no deformation in the case of knocks and stroke.They are also resistant to lubrication, acid and heat (-20 9C - +909C)
- These couplings need the least maintenance.
- Please call the Project department fort he applications which are not in the catalogue.



BOYUT: 105-360

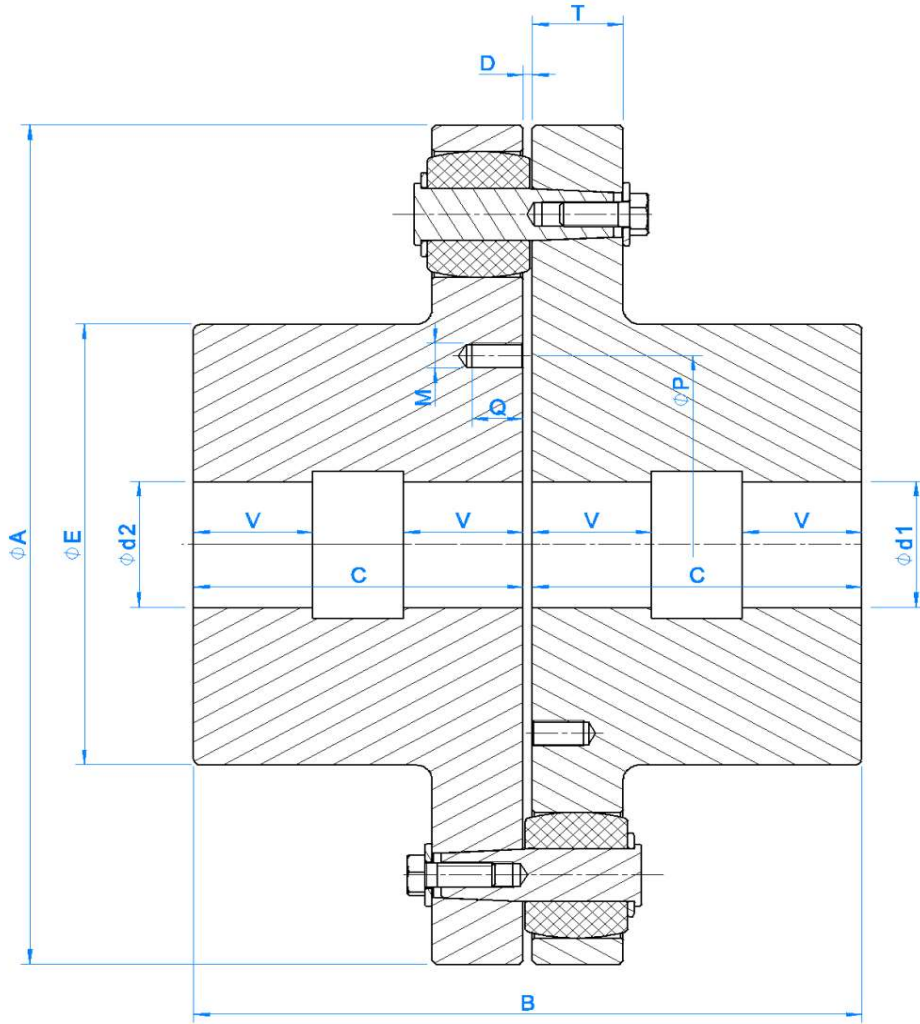
SIZE :105-360



BOYUT: 400-500

SIZE :400-500

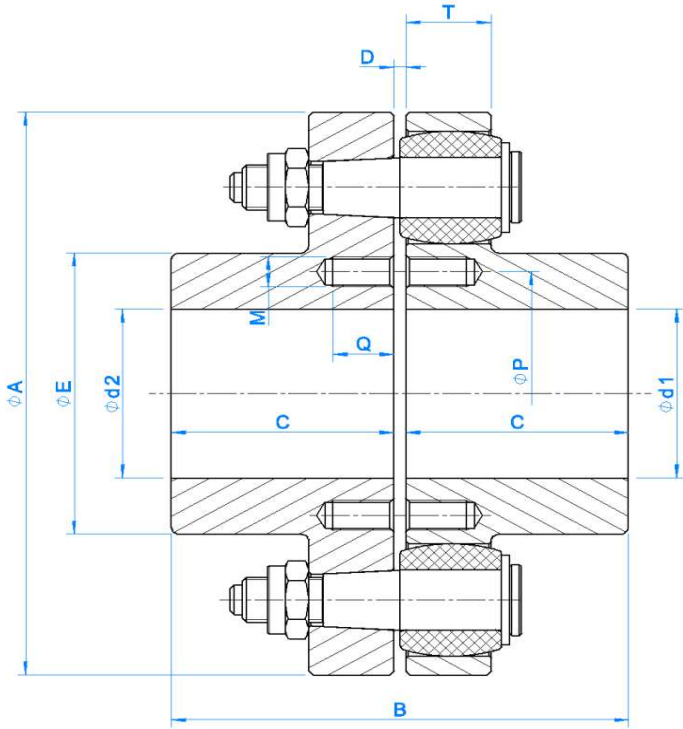
TIP TYPE	MOMENT TORQUE (N)	ÖLÇÜLER (mm) DIMENSIONS (mm)											DEVİR d/d REVOLUTION Rpm (max)	AGIRLIK WEIGHT (Hmin) (kg)
		DELİK BORE d1&d2		A	B	C	D	E	M (metric)	P	T	Q		
BOYUT SIZE	NOMINAL	min	max.											
105	200	---	32	105	93	45	3±1	54	---	---	13	---	7000	1,9
125	350	---	40	125	103	50	3±1	65	---	---	16	---	6000	3,2
150	700	---	45	150	113	55	3±1	75	8	70	21	15	4500	7,5
160	800	---	50	160	123	60	3±1	84	8	75	21	15	4300	9,2
180	1100	---	65	180	144	70	4±1	102	10	90	21	20	3800	13,8
200	1600	---	75	200	164	80	4±1	118	10	105	21	20	3400	18,7
230	2200	---	85	230	194	95	4±1	128	12	110	24	25	3000	26,5
250	3000	---	95	250	204	100	4±1	146	12	128	24	25	2700	34,5
285	4600	35	100	285	235	115	5±1,5	162	12	140	30	25	2400	52,0
320	5700	50	115	320	255	125	5±1,5	190	12	165	30	25	2100	73,0
360	8200	50	120	360	285	140	5±1,5	200	12	180	40	25	1900	99,0
400	12500	50	140	400	325	160	5±1,5	230	16	190	40	30	1800	117,0
450	18500	75	160	450	366	180	6±2	255	16	220	50	30	1600	166,0
500	25000	75	180	500	406	200	6±2	280	20	240	50	40	1400	218,0



BOYUT: 560-1250

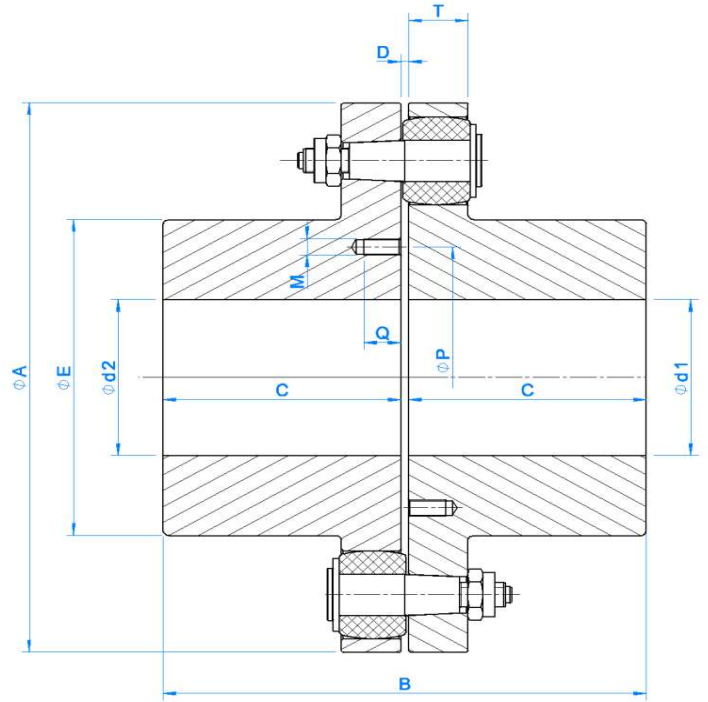
SIZE :560-1250

TIP TYPE	MOMENT TORQUE (N)	ÖLÇÜLER (mm) DIMENSIONS (mm)											DEVİR d/d REVOLUTION Rpm (max)	AGIRLIK WEIGHT (Hmin) (kg)	
		DELİK BORE		A	B	C	D	E	M (metric)	P	T	Q			V
RBG	NOMİNAL	d1&d2 min	d1&d2 max.												
BOYUT SIZE															
560	39000	80	200	560	446	220	6±2	310	20	270	68	40	70	1200	366,0
630	52000	100	220	630	486	240	6±2	340	20	280	68	40	80	1050	438,0
710	84000	120	240	710	528	260	8±2	375	24	320	80	45	80	950	634,0
800	110000	140	260	800	588	290	8±2	420	24	360	80	45	90	900	890,0
900	150000	150	290	900	648	320	8±2	465	30	400	90	60	100	800	1228,0
1000	195000	150	320	1000	708	350	8±2	510	30	430	90	60	110	700	1586,0
1120	270000	160	350	1120	770	380	10±3	560	30	480	100	60	120	600	2156,0
1250	345000	180	380	1250	850	420	10±3	610	30	520	100	60	130	550	2920,0



BOYUT: 105-360

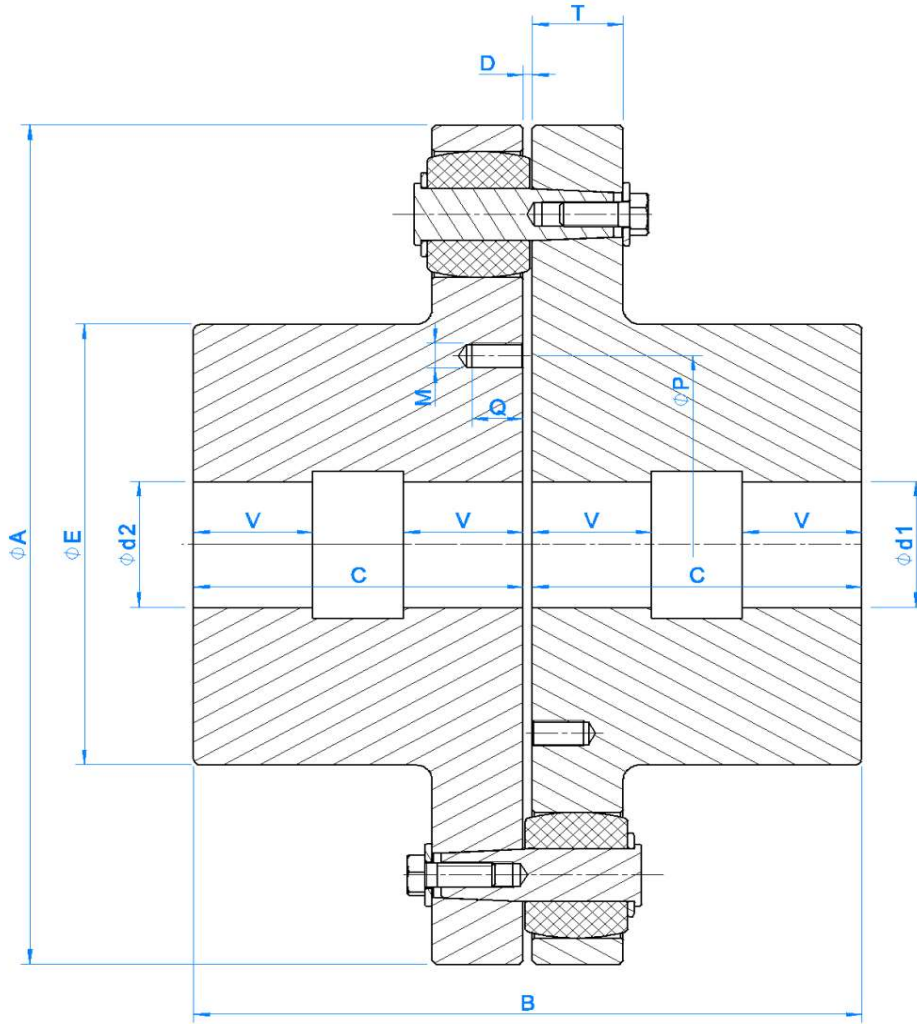
SIZE :105-360



BOYUT: 400-500

SIZE :400-500

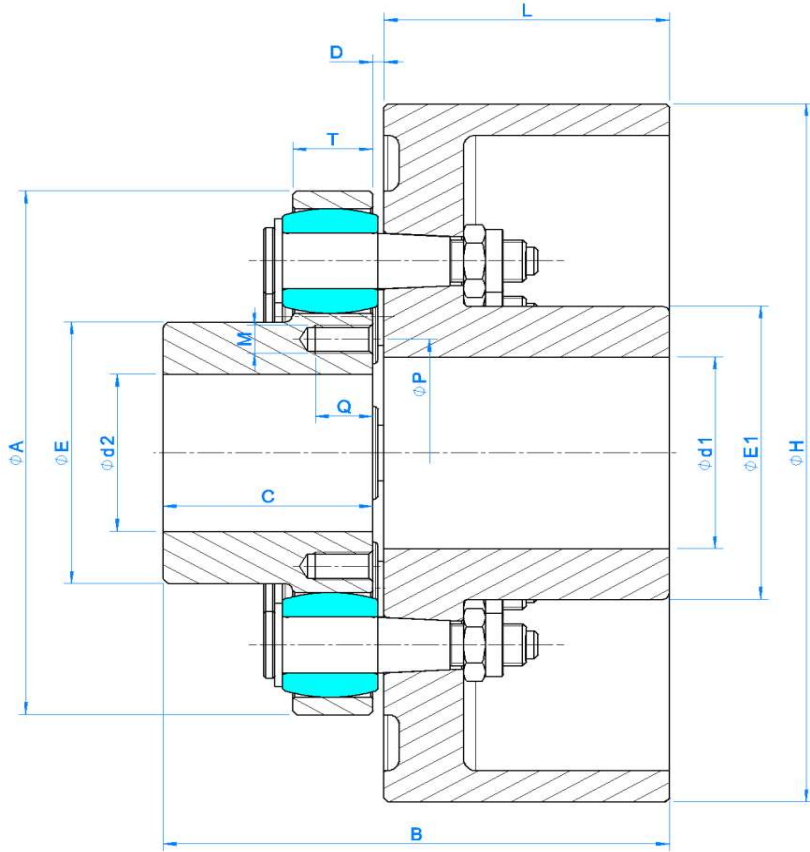
TIP TYPE	MOMENT TORQUE (N)	ÖLÇÜLER (mm) DIMENSIONS (mm)											DEVİR d/d REVOLUTION Rpm (max)	AGIRLIK WEIGHT (Hmin) (kg)
		DELİK BORE d1&d2		A	B	C	D	E	M (metric)	P	T	Q		
BOYUT SIZE	NOMINAL	min	max.											
105	200	---	---	105	93	45	3±1	54	---	---	13	---	7000	1,9
125	350	---	---	125	103	50	3±1	65	---	---	16	---	6000	3,2
150	700	---	50	150	113	55	3±1	75	8	70	21	15	5000	7,5
160	800	---	55	160	123	60	3±1	84	8	75	21	15	5000	9,2
180	1100	---	70	180	144	70	4±1	102	10	90	21	20	4900	13,8
200	1600	---	80	200	164	80	4±1	118	10	105	21	20	4600	18,7
230	2200	---	90	230	194	95	4±1	128	12	110	24	25	4400	26,5
250	3000	---	100	250	204	100	4±1	146	12	128	24	25	4200	34,5
285	4600	35	110	285	235	115	5±1,5	162	12	140	30	25	3900	52,0
320	5700	50	130	320	255	125	5±1,5	190	12	165	30	25	3500	73,0
360	8200	50	135	360	285	140	5±1,5	200	12	180	40	25	3100	99,0
400	12500	50	150	400	325	160	5±1,5	230	16	190	40	30	2800	117,0
450	18500	75	170	450	366	180	6±2	255	16	220	50	30	2500	166,0
500	25000	75	190	500	406	200	6±2	280	20	240	50	40	2200	218,0



BOYUT: 560-1250

SIZE :560-1250

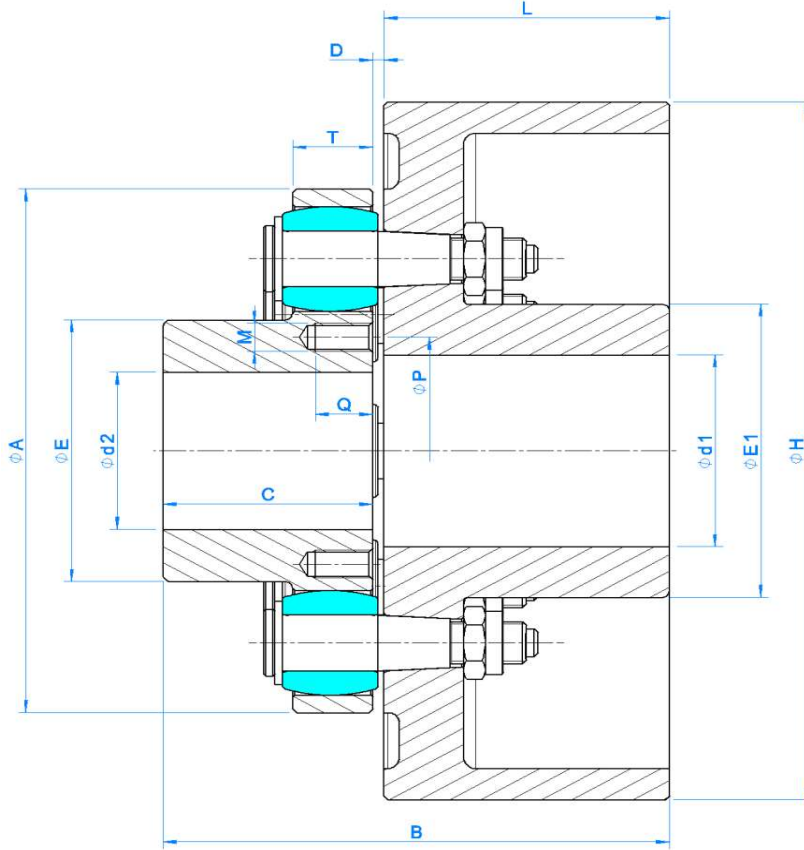
TIP TYPE	MOMENT TORQUE (N)	ÖLÇÜLER (mm) DIMENSIONS (mm)											DEVİR d/d REVOLUTION Rpm (max)	AGIRLIK WEIGHT (Hmin) (kg)	
		DELİK BORE		A	B	C	D	E	M (metric)	P	T	Q			V
BOYUT SIZE	NOMİNAL	d1&d2 min	d1&d2 max.												
560	39000	80	210	560	446	220	6±2	310	20	270	68	40	70	2000	366,0
630	52000	100	230	630	486	240	6±2	340	20	280	68	40	80	1800	438,0
710	84000	120	250	710	528	260	8±2	375	24	320	80	45	80	1600	634,0
800	110000	140	280	800	588	290	8±2	420	24	360	80	45	90	1400	890,0
900	150000	150	310	900	648	320	8±2	465	30	400	90	60	100	1250	1228,0
1000	195000	150	340	1000	708	350	8±2	510	30	430	90	60	110	1100	1586,0
1120	270000	160	370	1120	770	380	10±3	560	30	480	100	60	120	1000	2156,0
1250	345000	180	400	1250	850	420	10±3	610	30	520	100	60	130	900	2920,0



BOYUT: 150-360

SIZE :150-360

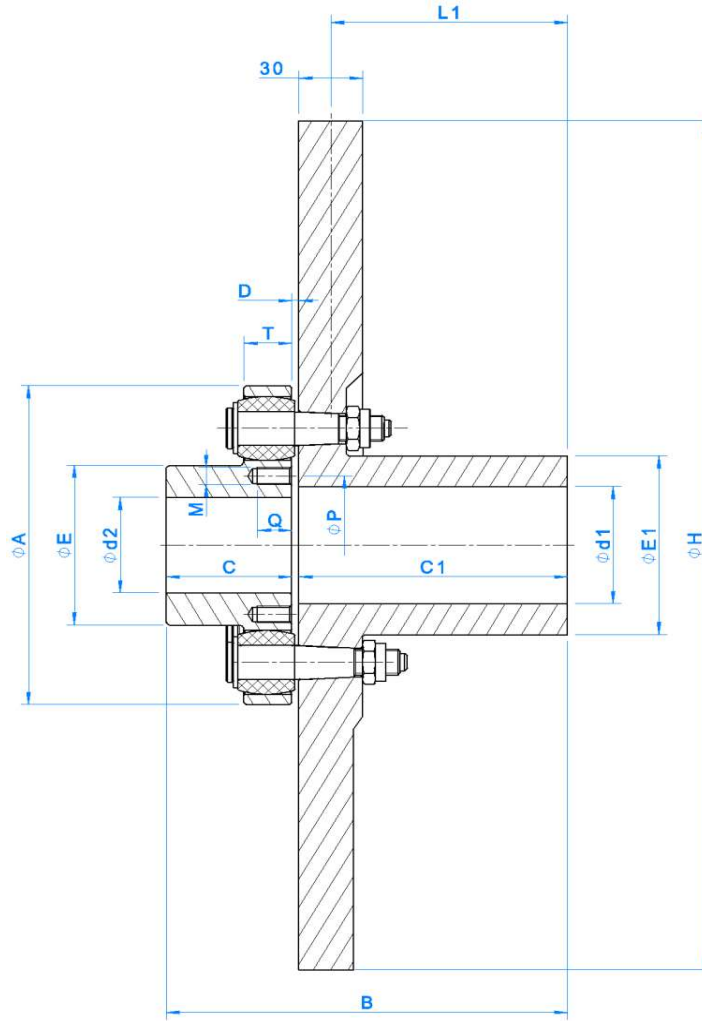
TIP TYPE	MOMENT TORQUE (N)	ÖLÇÜLER (mm) DIMENSIONS (mm)														DEVİR d/d	AGIRLIK	
RBG-K	NOMINAL	DELİK BORE			A	B	C	D	E	E1	H	L	M (metric)	P	T	Q	REVOLUTION	WEIGHT
BOYUT SIZE		d1&d2 min	d1 max.	d2 max.													Rpm (max)	(Hmin) (kg)
150	700	---	50	45	150	133	55	3±1	75	84	200	75	8	70	21	15	3400	10,4
160	800	---	60	50	160	158	60	3±1	84	92			8	75	21	15	2750	19,0
180	1100	---	70	65	180	169	70	4±1	102	108	250	95	10	90	21	20	2750	22,5
200	1600	---	80	75	200	179	80	4±1	118	128			10	105	21	20	2750	27,0
180	1100	---	70	65	180	192	70	4±1	102	108	315	118	10	90	21	20	2150	30,5
200	1600	---	80	75	200	202	80	4±1	118	128			10	105	21	20	2150	35,5
230	2200	---	90	85	230	249	95	4±1	128	140	400	150	12	110	24	25	1700	59,0
250	3000	---	100	95	250	254	100	4±1	146	160			12	128	24	25	1700	69,0
250	3000	---	100	95	250	294	100	4±1	146	160	500	190	12	128	24	25	1400	99,0
285	4600	35	110	100	285	310	115	5±1,5	162	175			12	140	30	25	1400	113,0
285	4600	35	110	100	285	356	115	5±1,5	162	175			12	140	30	25	1100	167,0
320	5700	50	120	115	320	366	125	5±1,5	190	192	630	236	12	165	30	25	1100	185,0
360	8200	75	130	125	360	381	140	5±1,5	200	210			12	180	40	25	1100	211,0
320	5700	50	120	115	320	395	125	5±1,5	190	192	710	265	12	165	30	25	950	232,0
360	8200	75	130	125	360	410	140	5±1,5	200	210			12	180	40	25	950	256,0



BOYUT: 150-360

SIZE :150-360

TIP TYPE	MOMENT TORQUE (N)	ÖLÇÜLER (mm) DIMENSIONS (mm)														DEVİR d/d	AGIRLIK	
RBS-K	NOMINAL	DELİK BORE			A	B	C	D	E	E1	H	L	M (metric)	P	T	Q	REVOLUTION Rpm (max)	WEIGHT (Hmin) (kg)
BOYUT SIZE		d1&d2 min	d1 max.	d2 max.														
150	700	---	60	50	150	133	55	3±1	75	84	200	75	8	70	21	15	5000	10,4
160	800	---	65	55	160	158	60	3±1	84	92			8	75	21	15	5000	19,0
180	1100	---	75	70	180	169	70	4±1	102	108	250	95	10	90	21	20	4900	22,5
200	1600	---	82	80	200	179	80	4±1	118	128			10	105	21	20	4600	27,0
180	1100	---	75	70	180	192	70	4±1	102	108	315	118	10	90	21	20	4350	30,5
200	1600	---	85	80	200	202	80	4±1	118	128			10	105	21	20	4350	35,5
230	2200	---	95	90	230	249	95	4±1	128	140	400	150	12	110	24	25	3400	59,0
250	3000	---	110	100	250	254	100	4±1	146	160			12	128	24	25	3400	69,0
250	3000	---	110	100	250	294	100	4±1	146	160	500	190	12	128	24	25	2750	99,0
285	4600	35	120	110	285	310	115	5±1,5	162	175			12	140	30	25	2750	113,0
285	4600	35	120	110	285	356	115	5±1,5	162	175			12	140	30	25	2150	167,0
320	5700	50	130	130	320	366	125	5±1,5	190	192	630	236	12	165	30	25	2150	185,0
360	8200	75	140	135	360	381	140	5±1,5	200	210			12	180	40	25	2150	211,0
320	5700	50	130	130	320	395	125	5±1,5	190	192	710	265	12	165	30	25	1900	232,0
360	8200	75	140	135	360	410	140	5±1,5	200	210			12	180	40	25	1900	256,0



BOYUT: 150-360

SIZE :150-360

TIP TYPE	MOMENT TORQUE (N)	ÖLÇÜLER (mm) DIMENSIONS (mm)																	DEVİR d/d REVOLUTION Rpm (max)	AGIRLIK WEIGHT (Hmin) (kg)	
		DELİK BORE			A	B	C	C1	D	E	E1	H		L1	M (metric)	P	T	Q			
BOYUT SIZE	NOMİNAL	d1&d2 min	d1 max.	d2 max.								min	max.								
RBG-D																					
150	700	---	45	45	150	273	55	215	3±1	75	84	315	500	200	8	70	21	15	2300	29,5	
160	800	---	50	50	160	278	60	215	3±1	84	92	355	560	200	8	75	21	15	2050	38,0	
180	1100	---	65	65	180	289	70	215	4±1	102	108	355	560	200	10	90	21	20	2050	43,0	
200	1600	---	75	75	200	299	80	215	4±1	118	128	400	560	200	10	105	21	20	2050	53,0	
230	2200	---	85	85	230	314	95	215	4±1	128	140	450	800	200	12	110	24	25	1450	74,0	
250	3000	---	100	95	250	319	100	215	4±1	146	160	500	800	200	12	128	24	25	1450	94,0	
285	4600	35	110	100	285	335	115	215	5±1,5	162	175	560	800	200	12	140	30	25	1450	121,0	
320	5700	50	125	115	320	345	125	215	5±1,5	190	192	560	1000	200	12	165	30	25	1150	138,0	
360	8200	50	130	120	360	362	140	217	5±1,5	200	210	560	1000	200	12	180	40	25	1150	165,0	

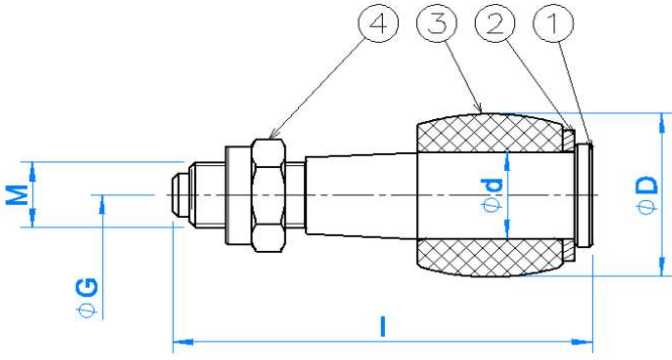
OLCUSEL TANIM TABLOSU

TIP : RUBFLEX YEDEK PARÇA

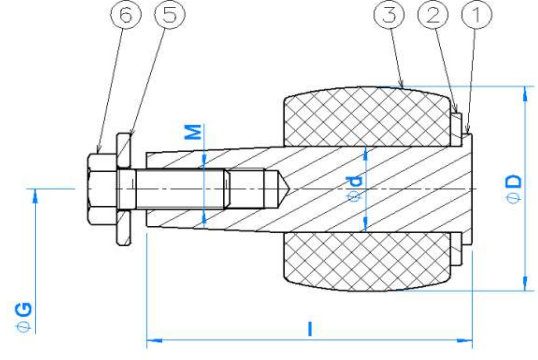


DIMENSIONS DATA SHEET

TYPE : RUBFLEX SPARE PARTS



BOYUT: 105-500
SIZES: 105-500



BOYUT: 560-1250
SIZES: 560-1250

PARÇA NO PART NO	ADI DENOMINATION	BOYUT: 105-500 SIZES: 105-500	BOYUT: 560-1250 SIZES: 560-1250
1	KONIK PİM / BOLT	✓	✓
2	RONDELA / RONDELLE	✓	✓
3	LASTİK / BUFFERS	✓	✓
4	FİBERLİ SOMUN / NUT	✓	
5	CIVATA / SCREW		✓
6	RONDELA / RONDELLE		✓

BOYUT SIZE	LASTİK ADEDİ NUMBER PER SET	PARAMETRELER / PARAMETERS				
		D	d	G	I	M
105	8	20	8	77	48	6
125	8	24	10	92	58,5	8
150	8	30	16	110	69	12
160	9			118		
180	10			138		
200	12			154		
230	10	40	20	175	81	16
250	12			195		
285	11	48	25	220	96	18
320	12			254		
360	10			64		
400	12	316				
450	10	78	35	348	142	20
500	12			398		
560	12	100	42	434	147	24
630	14			500		
710	14	120	50	550	176	24
800	16			630		
900	16	136	55	710	202	24
1000	18			800		
1120	18	155	60	900	224	30
1250	20			1000		

TABLO-19: YÜK SINIFLANDIRMASI

TABLE-19: LOAD CLASSIFICATION

ARITMA ENDÜSTRİSİ REFINE INDUSTRY		İÇECEK ENDÜSTRİSİ DRINKING INDUSTRY		LASTİK ve PLASTİK ENDÜSTRİSİ RUBBER and PLASTIC INDUSTRY	
Aeratörler Aerators	M	Şişleme Makinaları Botling and Container Filling Machines	U	Karıştırıcılar Mixers	H
Blowerler Blowers	M			Lastik Çekme ve Ütuleme Rubber Rolling Miles	M
Burgulu Pompalar Screw Pumps	M	İNŞAAT MAKİNALARI BUILDING MACHINERY		Elekler Sieves	U
Izgaralar,Kollektörler,Izgara Presleri Collectors,Gird Presses	U	Çimento Mikserleri, İnşaat Vinçleri Concrete Mixers, Hoists	M	METAL İŞLEME MAKİNALARI METAL WORKING MACHINES	
Mikser,Yoğunlaştırıcı,Vakum Presler Mixer,Condenser,Vacum Presses	U	Yol Yapım Makineleri Road Construction Machinery	M		
ÇİMENTON ENDÜSTRİSİ CEMENT MILL MACHINERY INDUSTRY		JENERATÖRLER GENERATOR		Eğme, Bükme, Presleme Bending Presses	M
Fırınlar ve Kurutucular Furnace and Dehumidifier	M	Enerji Üretiminde Steady Loadings	M	Ana Tahrikler Main Drives	M
Soğutucular Coolers-Chiller	M	KAĞIT AMKİNALARI PAPER MACHINES	H	Yardımcı Tahrikler Auxiliary Drives	U
DEMİR ÇELİK ENDÜSTRİSİ IRON andd STEEL INDUSTRY		KARIŞTIRICILAR AGITATOR		POMPALAR PUMPS	
Tel ve Diğer Çekme Tezgahlar Wire and Other Draw Machines	M	Saf Sıvılar Pure Liquid (Constant density)	U	Santrifüj, Dişli, Lup Centrifuge	U
Yuvarlak, Plaka, Kama Çekme Bar and Plate Draw Machines	M	Sıvılar ve Katılar Liquid with firm bodies mixed	M	Silindri Tip (Tek veya Çoklu) Cylindrical Type	M
ELEKLER SIEVES		Sıvılar (Değişken Yoğunluklu) Liquid with variable density	M	Vidalı Pompalar Screw Pump	M
Taş ve Çakıl Döner Elekleri Stone and Pebbie Sieves	M	KOMPRESÖRLER COMPRESSORS		TESTERLER SAWS	U
Su Alma Elekleri Leaking Sieves	U	Santrifüj (Lup ve Rotary Tip) Liquid with variable density	U	TEKSTİL ENDÜSTRİSİ TEXTILES MACHINERY	M
ASANSÖRLER ELEVATORS		Tek ve Çok Silindirler Cylinders	H	YAĞ ENDÜSTRİSİ OIL INDUSTRY	
Yürüyen Merdiven Escalators	U	KONVEYÖRLER CONVEYORS			
Sepet ve Vagon Tipi Bucket Conveyors	M	Düzenli Yükleme Uniform Loading	U	Döner Fırınlar, Parafin Presleri Potary Drilling Equipment	M
FANLAR FANS		Ağır Hizmet Tipi Heavy Loading	M	YİYECEK ENDÜSTRİSİ FOOD INDUSTRY MACHINERY	
Santrifüj (Endüstriyel Tip) Centrifuges (Small and large industrial fans)	U	KREYN ve KALDIRMA MAKİNALARI CRANES			
Madencilik Endüstrisi Large Fans (mines etc.)	M	Kaldırma Makinaları Lifting Machines	M	Doğrama, Karıştırma, Öğütme Mak. Choppig, Mixing and Grinding Machines	M
Sogutma Kuleleri Cooling Tower Fans	M	Yürüyüş Grupları Movement Equipment	U	Doldurma Makineleri Filling Machines	U

TABLO-20: SERVİS FAKTÖRÜ

TABLE-20: SERVICE FACTOR

TAHRİK EDEN PRIME MOVER	GÜNLÜK ÇALIŞMA SAATI Daily operating period (hours)		DÜZGÜN YÜK UNIFORM LOAD	ORTA ŞOKLU YÜK MEDIUM SHOCK LOAD	AGIR YÜK HEAVY SHOCK LOAD
	Saat/Gün Hour/Day		U	M	H
ELEKTRİK MOTORU ELECTRIC ENGINE	3'den az up to 3		0,90	1,25	2,00
	3-10		1,00	1,50	2,25
	10-24		1,25	1,75	2,50
4 SİLİNDİR VE ÜSTÜ MOTORLAR 4 CYL ENGINE AND OVER	3'den az up to 3		1,00	1,50	2,25
	3-10		1,25	1,75	2,50
	10-24		1,50	2,00	2,75
1 ve 3 SİLİNDİRLİ MOTORLAR 1 and 3 CYLINDER ENGINES	3'den az up to 3		1,50	2,00	2,75
	3-10		1,75	2,25	3,00
	10-24		2,00	2,50	3,25

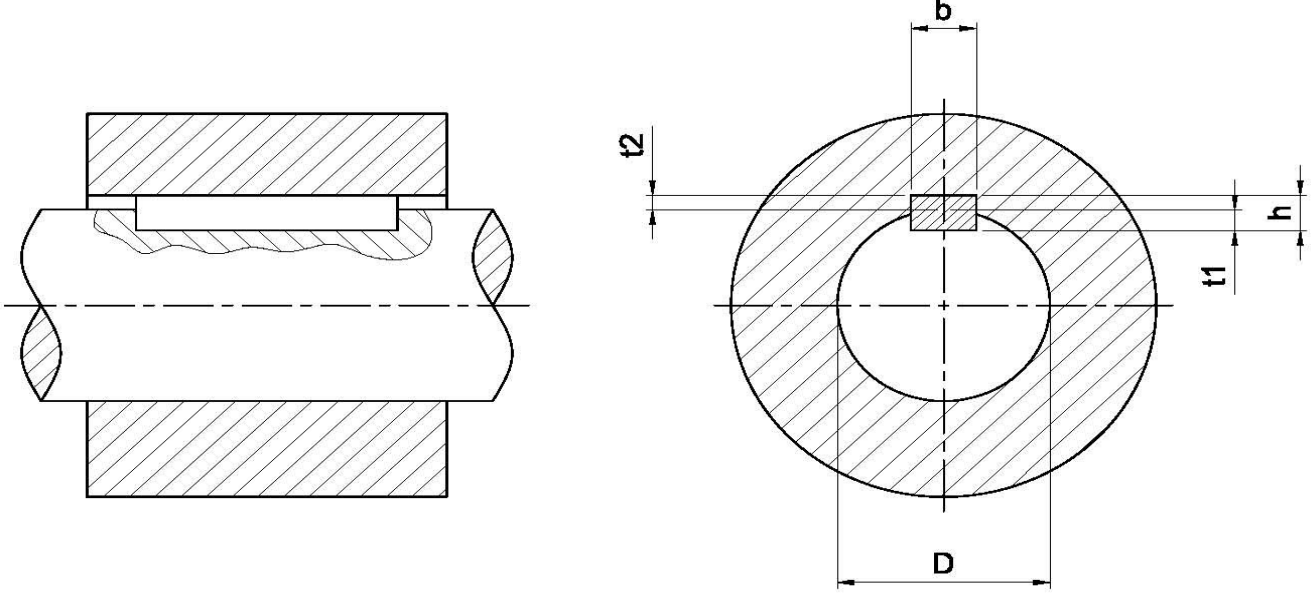
ÖRNEK : TAHRİK ŞEKLİ = ELEKTRİK MOTORU
MAKİNA TİPİ = VİNÇ KALDIRMA GRUBU
YÜK SINIFI = M (TABLO-1)
MOTOR GÜCÜ = 15 KW
DEVİR = 950 d/d
GÜNLÜK ÇALIŞMA = 7 Saat / Gün
SERVİS FAKTÖRÜ = 1,5 (TABLO-2)

EXAMPLE: DRIVING TYPE = ELECTRICAL ENGINE
MACHINE TYPE = LIFTING MACHINE
LOAD CLASSIFICATION = M (TABLE-1)
POWER = 15 KW
REVOLUTION = 950 RPM
DAILY OPERATIOM = 7 Hours / Day
SERVICE FACTOR = 1,5 (TABLO-2)
M = 9550xNe/n M (Nm) Ne (Kw) n (RPM)
M = 9550x15/950=150,78 Nm
NOMİNAL MOMENT = Mn
Mn=MxSf Mn=150,78x1,5=226,17Nm

M = 9550xNe/n M (Nm) Ne (Kw) n (d/d)
M = 9550x15/950=150,78 Nm
TÜKETİLEN NOMİNAL MOMENT = Mn
Mn=MxSf Mn=150,78x1,5=226,17Nm

Firmamız tüm talaşlı imalat işlemlerinde
ISO R 773 Standartlarını kullanmaktadır.

We use standart of ISO R773 for all of our works



Tablo 21

Çap Diameter	Genişlik Width	Yükseklik Height	Derinlik Depth	Tolerans Tolerance	Derinlik Depth	Tolerans Tolerance	Tolerans Tolerance		Tolerans Tolerance	
							JS9		P9	
							min	max.	min	max.
D	b (P9)	h	t1	$\Delta t1$	t2	$\Delta t2$				
>10÷12	4	4	2,5	+ 0,1	1,8	+ 0,1	-0.150	+0.150	-0.042	-0.012
>12÷17	5	5	3	+ 0,1	2,3	+ 0,1	-0.150	+0.150	-0.042	-0.012
>17÷22	6	6	3,5	+ 0,1	2,8	+ 0,1	-0.150	+0.150	-0.042	-0.012
>22÷30	8	7	4	+ 0,2	3,3	+ 0,2	-0.180	+0.180	-0.051	-0.015
>30÷38	10	8	5	+ 0,2	3,3	+ 0,2	-0.180	+0.180	-0.051	-0.015
>38÷44	12	8	5	+ 0,2	3,3	+ 0,2	-0.215	+0.215	-0.061	-0.018
>44÷50	14	9	5,5	+ 0,2	3,8	+ 0,2	-0.215	+0.215	-0.061	-0.018
>50÷58	16	10	6	+ 0,2	4,3	+ 0,2	-0.215	+0.215	-0.061	-0.018
>58÷65	18	11	7	+ 0,2	4,4	+ 0,2	-0.215	+0.215	-0.061	-0.018
>65÷75	20	12	7,5	+ 0,2	4,9	+ 0,2	-0.260	+0.260	-0.074	-0.022
>75÷85	22	14	9	+ 0,2	5,4	+ 0,2	-0.260	+0.260	-0.074	-0.022
>85÷95	25	14	9	+ 0,2	5,4	+ 0,2	-0.260	+0.260	-0.074	-0.022
>95÷110	28	16	10	+ 0,2	6,4	+ 0,2	-0.260	+0.260	-0.074	-0.022
>110÷130	32	18	11	+ 0,2	7,4	+ 0,2	-0.310	+0.310	-0.088	-0.026
>130÷150	36	20	12	+ 0,3	8,4	+ 0,3	-0.310	+0.310	-0.088	-0.026
>150÷170	40	22	13	+ 0,3	9,4	+ 0,3	-0.310	+0.310	-0.088	-0.026
>170÷200	45	25	15	+ 0,3	10,4	+ 0,3	-0.310	+0.310	-0.088	-0.026
>200÷230	50	28	17	+ 0,3	11,4	+ 0,3	-0.310	+0.310	-0.088	-0.026
>230÷260	56	32	20	+ 0,3	12,4	+ 0,3	-0.370	+0.370	-0.106	-0.032
>260÷290	63	32	20	+ 0,3	14,4	+ 0,3	-0.370	+0.370	-0.106	-0.032
>290÷330	70	36	20	+ 0,3	15,4	+ 0,3	-0.370	+0.370	-0.106	-0.032
>330÷380	80	40	25	+ 0,3	17,4	+ 0,3	-0.370	+0.370	-0.106	-0.032
>380÷440	90	45	28	+ 0,3	17,4	+ 0,3	-0.435	+0.435	-0.124	-0.037
>440÷500	100	50	31	+ 0,3	19,5	+ 0,3	-0.435	+0.435	-0.124	-0.037